

# IZAR MBUS COMPACT I

MBUS EMITTER



## APPLICATION

The new modules IZAR MBUS COMPACT i are the center of the modular inductive concept developed by Diehl Metering. They can be clipped onto all the meters of the Diehl Metering inductive (Ti) or mixed (Ha+Ti) modular range with grey ring, making them "communicative" in a very easy way.

IZAR MBUS COMPACT i provide informations using M-Bus protocol (EN 13757), enabling billing (index...), monitoring (flow rate, direction...) and the management/follow-up of the installation (tampering, cable cut-off and unclipping alarms ....).

It may be connected to different systems such as M-Bus or fixed networks, monitoring, or consumption-analysis systems.

IZAR MBUS COMPACT i features a clamping ring for totally secured mounting (sealable cam) and easy reinstallation on another meter.

## FEATURES

- ▶ Compatible with inductive modularity "Ti"
- ▶ 2 non-polarized output wires
- ▶ Flow rate direction management
- ▶ Events log and alarms available
- ▶ M-Bus compatible (EN 13757)
- ▶ IP 68
- ▶ Lifetime up to 15 years

# IZAR MBUS COMPACT I

MBUS EMITTER

## PRINCIPLE

| IZAR MBUS COMPACT i |                                |
|---------------------|--------------------------------|
| Sensor              | Inductive (Ti)                 |
| Principle           | Detection of a half metal disk |
| Output type         | M-Bus output (EN13757)         |

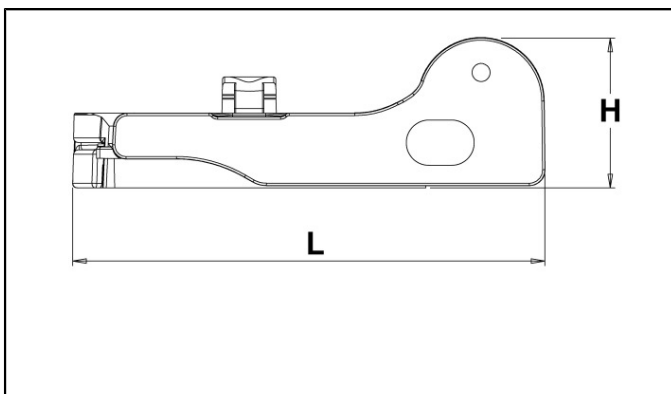
## SPECIFICATIONS

| IZAR MBUS COMPACT i                 |  |
|-------------------------------------|--|
| Number of wires                     | 2 non-polarized  |
| Cable length                        | m 2  |
| Baud rates                          | bauds 300 or 2,400 - automatic detection   |
| Power supply                        | Via M-Bus network and lithium battery  |
| M-Bus absorbed current              | mA 1.5 (standard load)   |
| Battery lifetime                    | Up to 15 years   |
| Electromagnetic compatibility (EMC) | Complies with the European directive related to electromagnetic compatibility (2014/30/EU) |
| Operating temperatures range        | °C -15 ... +55   |
| Storage temperatures range          | °C -20 ... +70   |
| Protection class                    | IP 68  |
| Programming software                | IZAR@MOBILE 2 SET Expert   |
| Reading software                    | IZAR@CENTER, IZAR@MOBILE 2 Windows SET Expert, IZAR@NET 2, IZAR PLUS PORTAL                |

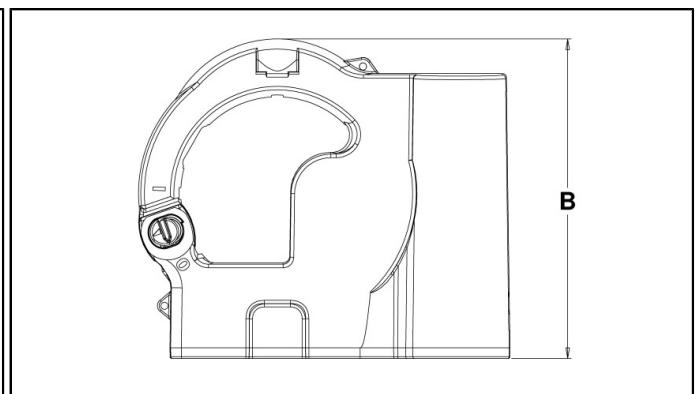
## FUNCTIONS AND ALARMS

| IZAR MBUS COMPACT i             |   |
|---------------------------------|---|
| Media type                      | Programmable identification (cold water, hot water)   |
| Historical index                | 24 values (monthly, weekly, daily)  |
| Flow rate direction             | Consumed flow rate in both way  |
| Current flow rate               | With an integration period for calculation (1 ... 60 min.) and flow direction indicator   |
| Min. max. and average flow rate | Statistical values of the minimum, maximum and average flow rates   |
| Alarms                          | Low battery, unclipping, sensor fraud, backflow, over flow, under flow, early leakage detection, nil consumption, cable cut-off |

## DIMENSIONS



Side view



Top view

| IZAR MBUS COMPACT i |   |    |     |
|---------------------|---|----|-----|
| Length              | L | mm | 100 |
| Height              | H | mm | 33  |
| Width               | B | mm | 100 |