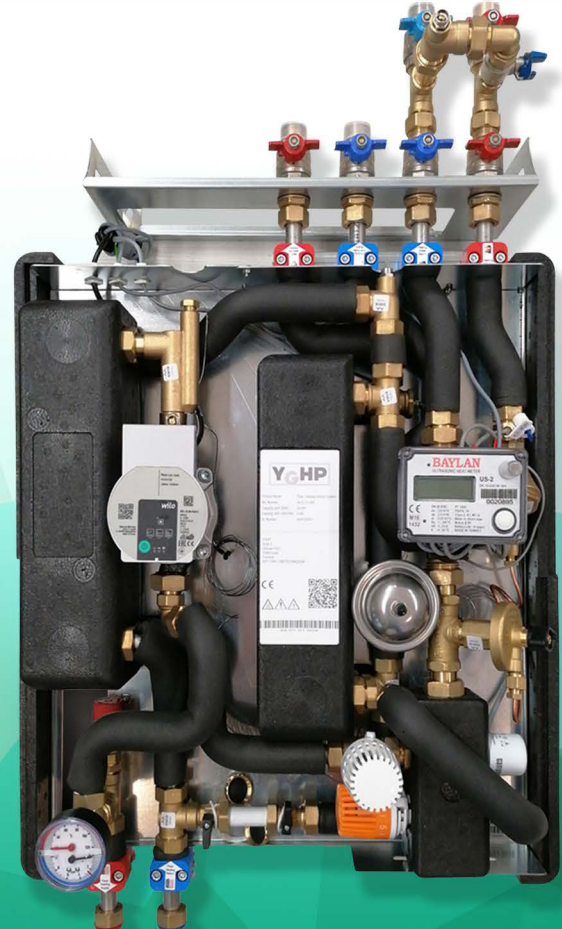




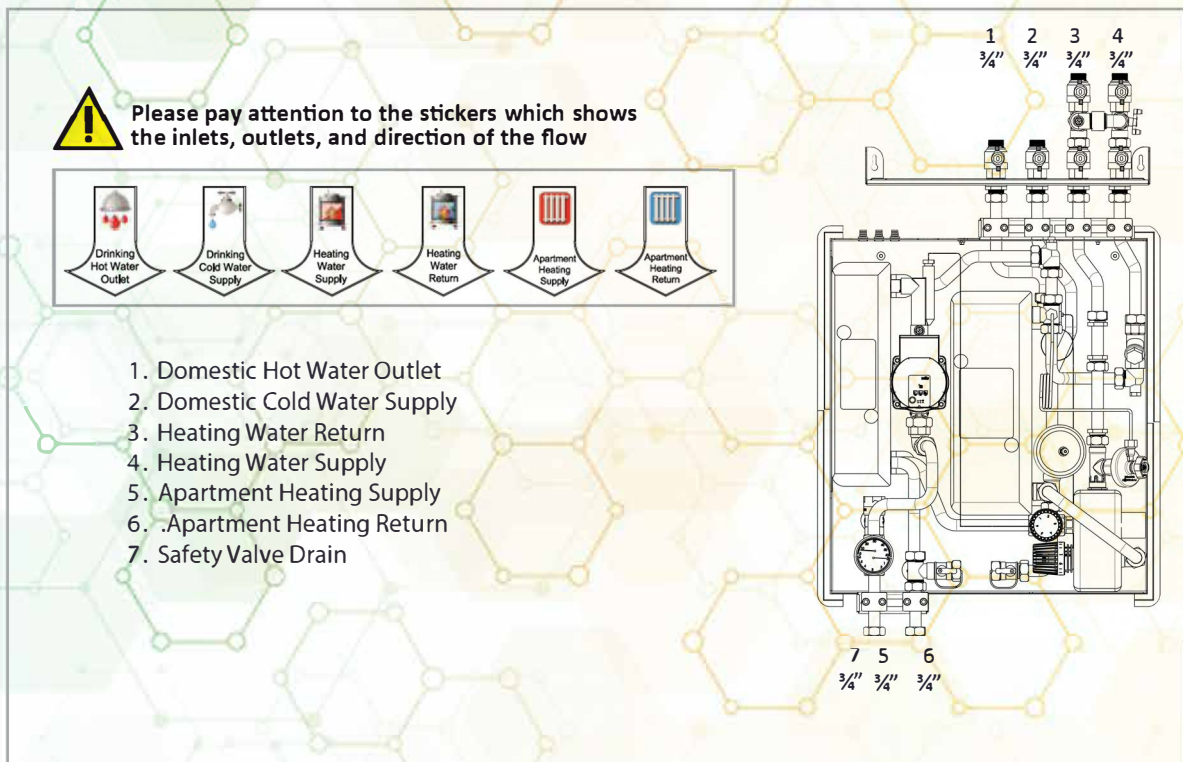
HIU Indirect Series - Cover On



HIU Indirect Series - Cover Off

- Heat interface units are a complete solution for apartments for hydraulic separated systems.
- Secondary system can be radiators or underfloor heating.
- Balancing valves can be radiators or underfloor heating.
- Stainless steel heat exchanger and thermostatic controlling valve to have a stable temperature domestic hot water up to 23 lt/min.
- Stainless steel heat exchanger is used to hydraulically separate the apartment from the main system.
- Thermostatic controlled valves are used to control the secondary side supply temperature.
- Energy efficient electronically controlled pump controls the flow of secondary side heating.
- All the consumption of heating and domestic hot water preparation can be measured by one heat meter and cold water meter.
- All the piping is stainless steel.
- Stainless steel pipe 18 x 1mm (AISI 304)
- Galvanised back plate
- Brazed heat exchanger for hot water
- Brazed heat exchanger for heating
- Special immersion thermostatic control valve for hot water
- Special immersion thermostatic control valve for heating
- In-wall cabinets (Optional)
- EPP cover for maximum heat loss protection
- Differential pressure balancing valve inlet 20-65 kpa
- Energy efficient electronically controlled pump
- Heat meter spare part (Demand on request)
- Cold water meter spare part (Demand on request)
- Brass connections
- Dirt catchers
- Mounting plate with ball valves (Optional)
- On-wall cabinets (Optional)

Dimension Size Width x Height x Depth:	540 x 600 x 296 mm
Max. Operating Pressure:	PN16
Max. Operating Temperature (Heating Water Supply)	90°C
Maximum Pressure Loss in Primary Side:	35kPa
Maximum Pressure Loss in Secondary Side:	30kPa
Heat Exchanger Capacity:	33kW - 50kW - 65kW
Domestic Hot Water Flow Rates:	12 lt/min - 18 lt/min - 23 lt/min



Note: All YGHP HIU components are front facing for ease of installation and service. The very latest thermostatic technology allows both heating and hot water to work simultaneously.